

# Gateways

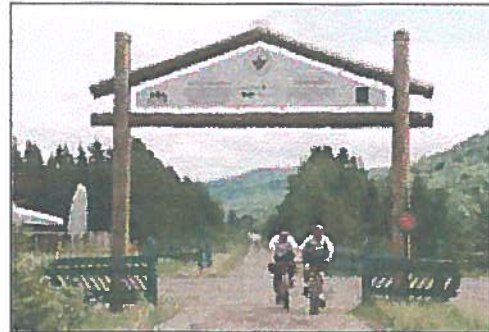


## Inter-Provincial Gateways

The Trans Canada Trail as a visionary, cooperative project that invites all Canadians to participate in a healthy, family-oriented activity that affirms our love of nature and nurtures pride in our great country.

As trail-users make their way along this magnificent Trail, they will be greeted at each province and territory by a Trans Canada Trail Gateway marking the path and passage of the Trail across our country. There will be twelve such Gateways throughout Canada with the first on being on the Québec-New Brunswick border. This Gateway was officially opened on June 19, 1997.

The Trans Canada Trail Foundation is very much a cooperative effort between the people, the governments and the private sectors of neighboring provinces and territories. These Gateways symbolize the spirit and commitment that must prevail at all levels of our society to transform this grand vision into a great reality – and a lasting legacy from our generation to the generations yet to come.



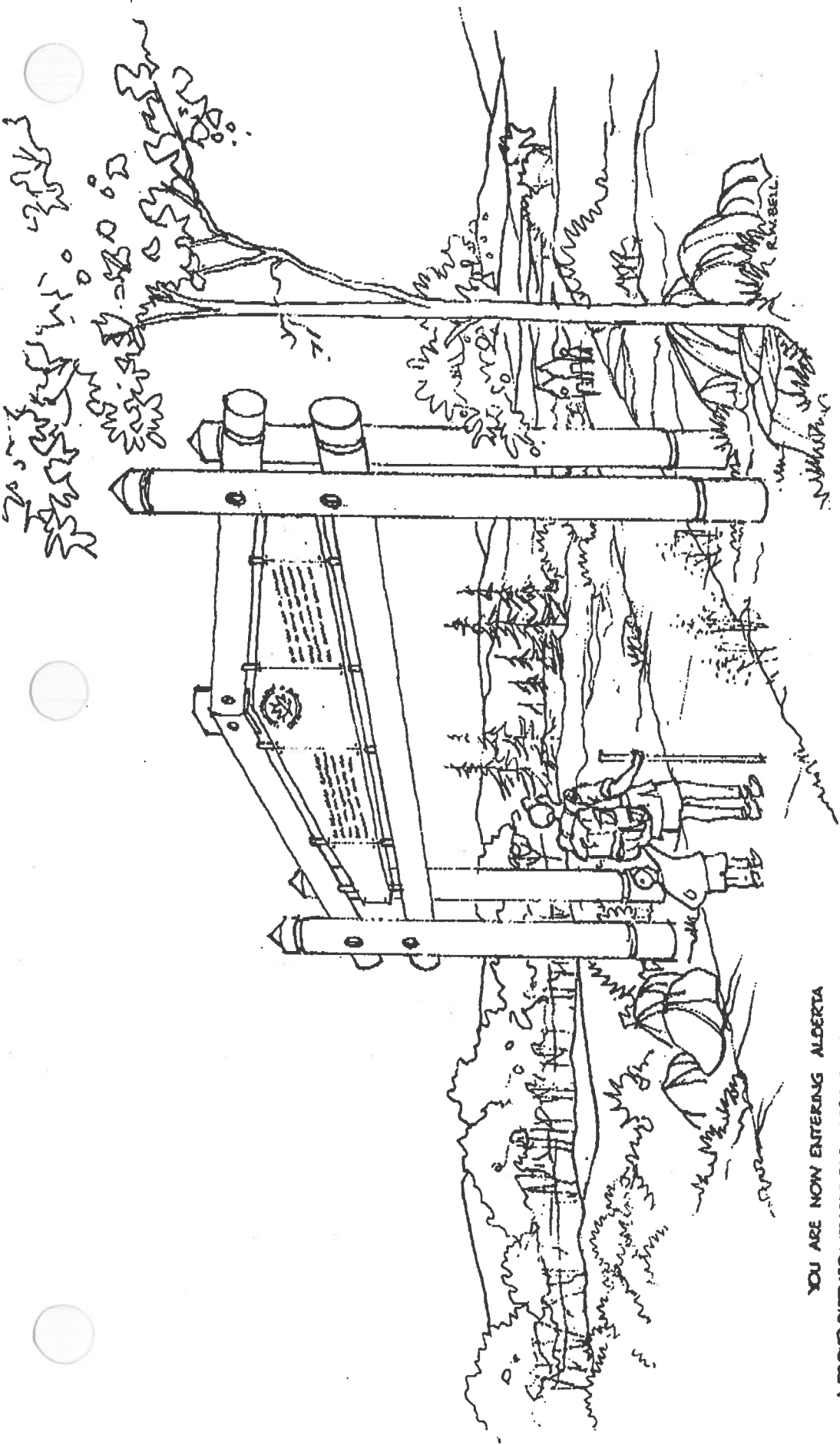
Inter-provincial gateway in St. Jacques, New Brunswick. Officially opened on June 19, 1997.



Detail of panel on gateway welcoming travellers to New Brunswick. The reverse side welcomes travellers to Quebec.

[About the Pavilions](#) | [Gateways](#) | [Panels](#)

[Home](#) | [Trail](#) | [Metre Sales](#) | [Sponsors](#) | [Provinces](#) | [Pavilions](#) | [Merchandise](#) | [News](#)



YOU ARE NOW ENTERING ALBERTA

A PROUD PARTNER WITH THE PROVINCES, THE TERRITORIES AND THE GOVERNMENT OF CANADA IN THE 'TRANS CANADA TRAIL' WHICH SPANS THIS GREAT COUNTRY FROM COAST TO COAST.

WORDING FOR SIGN (BOTH SIDES OF ARCH IN ENGLISH & FRENCH)

PERSPECTIVE SKETCH.

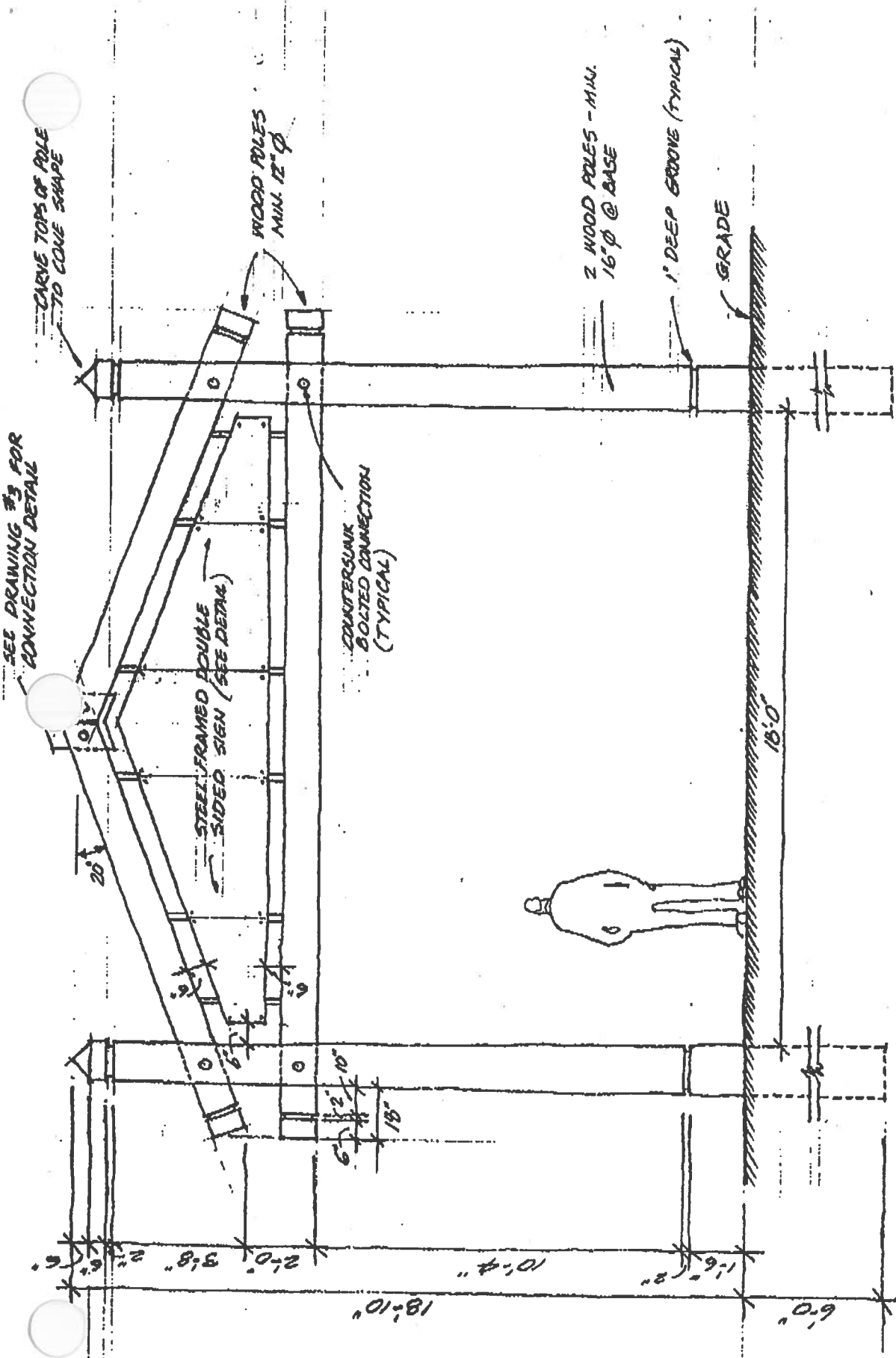
# THE PROVINCIAL GATEWAY

DRAWING #1

## THE PROVINCIAL GATEWAY FOR THE TRANS CANADA TRAIL

MAY 2<sup>ND</sup> 1996

W.G. MILNE ARCHITECT.. LTD.

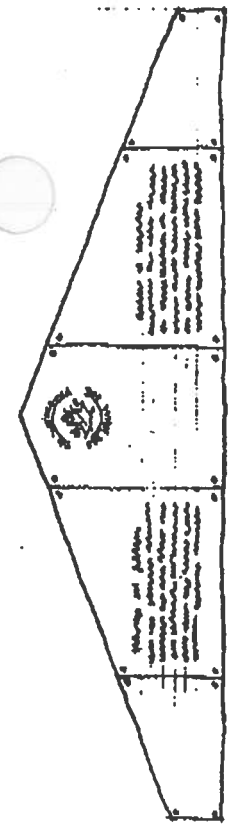


ELEVATION scale 1/4" = 1'-0"

DRAWING #2

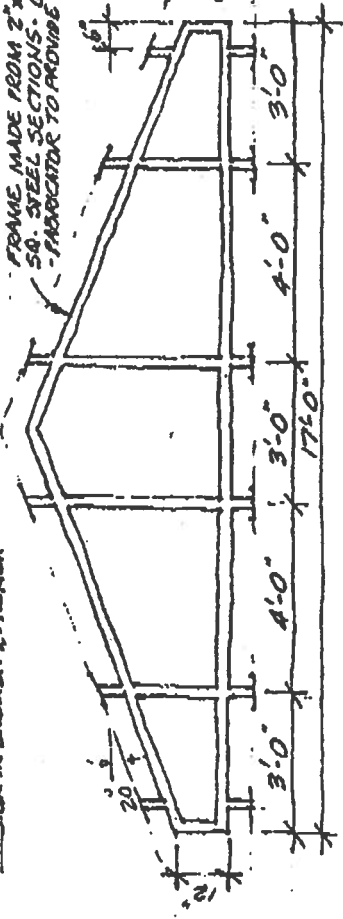
THE PROVINCIAL GATEWAY FOR THE TRANS CANADA TRAIL

MAY 2<sup>ND</sup> 1996 W.G. MILNE ARCHITECT LTD.



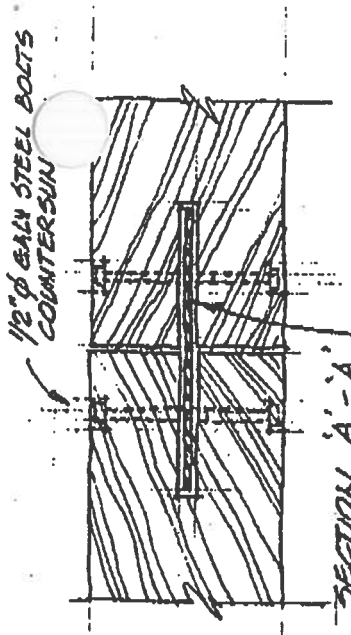
ELEVATION • SIGN BY OTHERS • scale 1/4" = 1'-0"

NOTE!  
SIGN ON BOTH SIDES OF ARCH MADE OF 5 SEPARATE PANELS BOWED TO STEEL FRAME (ALUMINUM LASER CUT PANELS WITH FUSED GRAPHICS - BY OWNER)  
SIGN IN ENGLISH & FRENCH



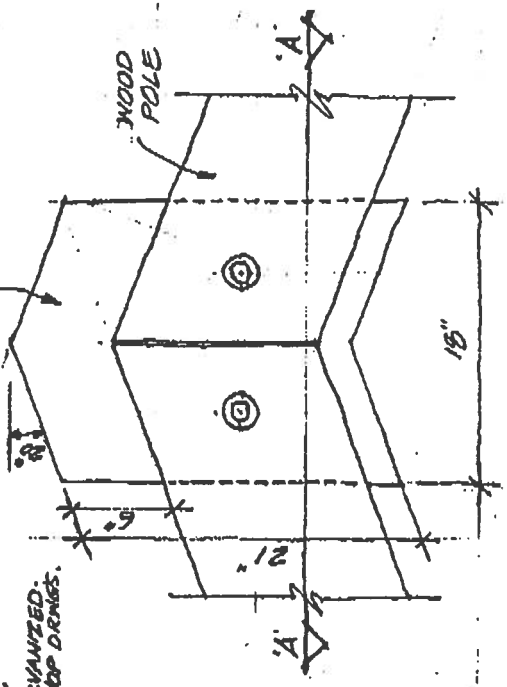
ELEVATION • STEEL FRAME FOR SIGN • scale: 1/4" = 1'-0"

NOTE!  
FRAME FOR SIGN INCLUDED IN THIS CONTRACT



SECTION A-A

1/2" Ø BEAM STEEL BOLTS COUNTERSUN  
1/4" STEEL CONNECTING PLATE - GALVANIZED - IN SLOT IN POLES



ELEVATION

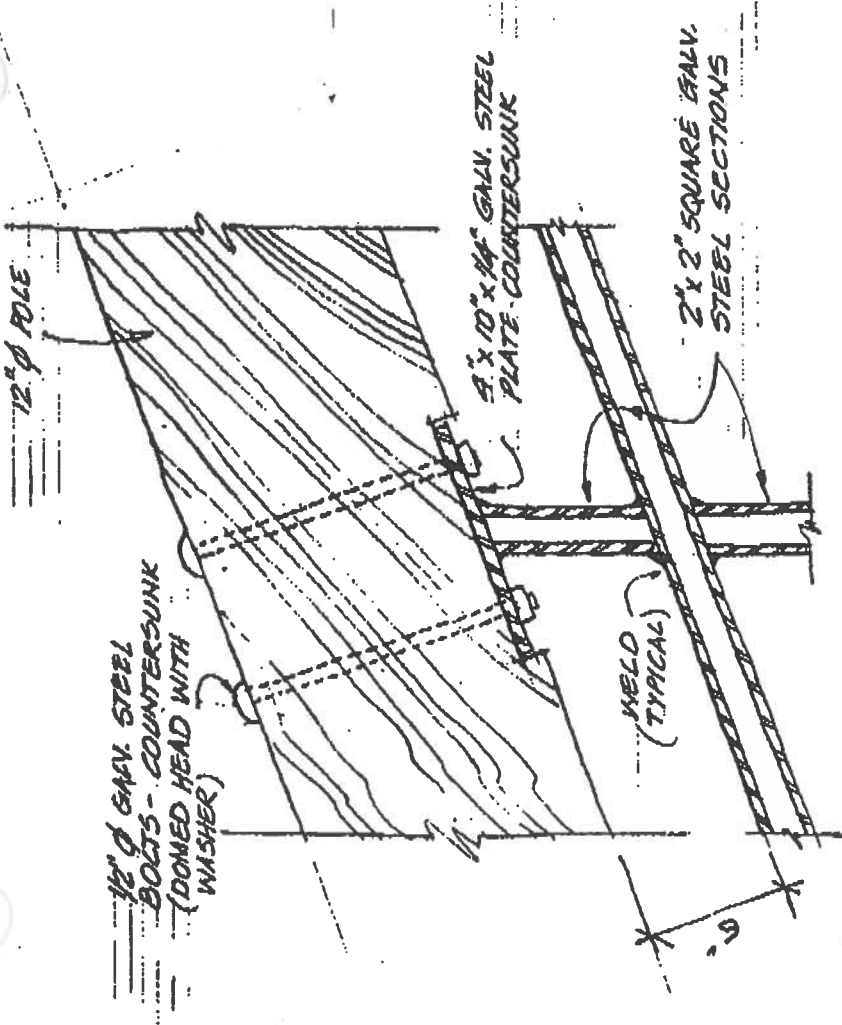
DETAIL • ARCH APEX • scale 1" = 1'-0"

DRAWING # 3

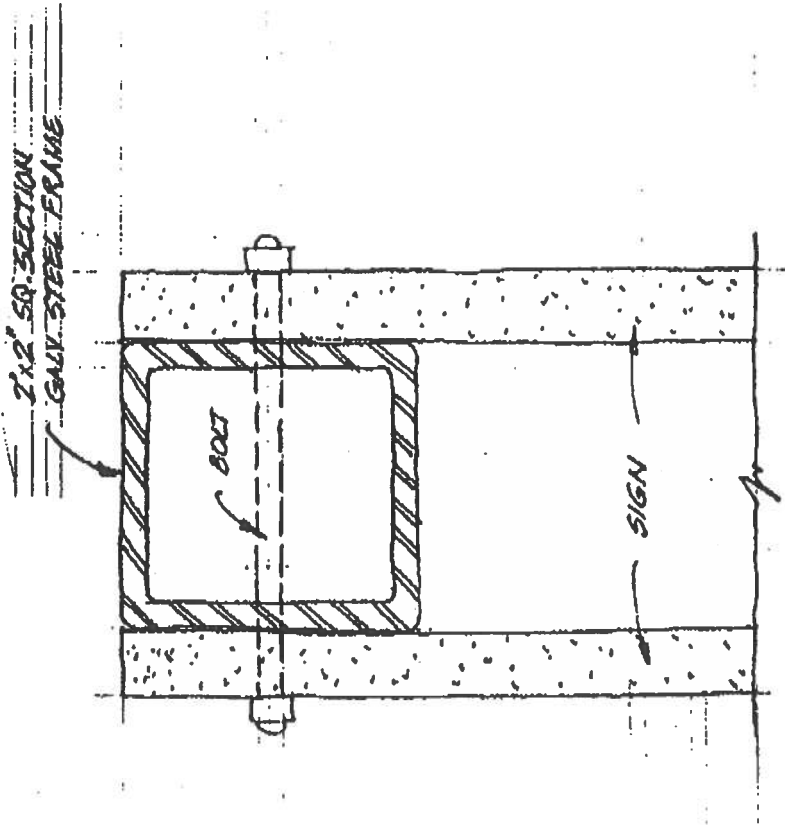
THE PROVINCIAL GATEWAY  
FOR THE TRANS CANADA TRAIL

MAY 2 1996

W.G. MILNE ARCHITECT LTD.



DETAIL • ANCHORING OF SIGN FRAME



DETAIL • EDGE OF SIGN  
Scale: 3/4" F.S.

DRAWING # 4

MAY 2<sup>ND</sup> 1996  
W.G. MILNE ARCHITECT. LTD.

THE PROVINCIAL GATEWAY  
FOR THE TRANS CANADA TRAIL